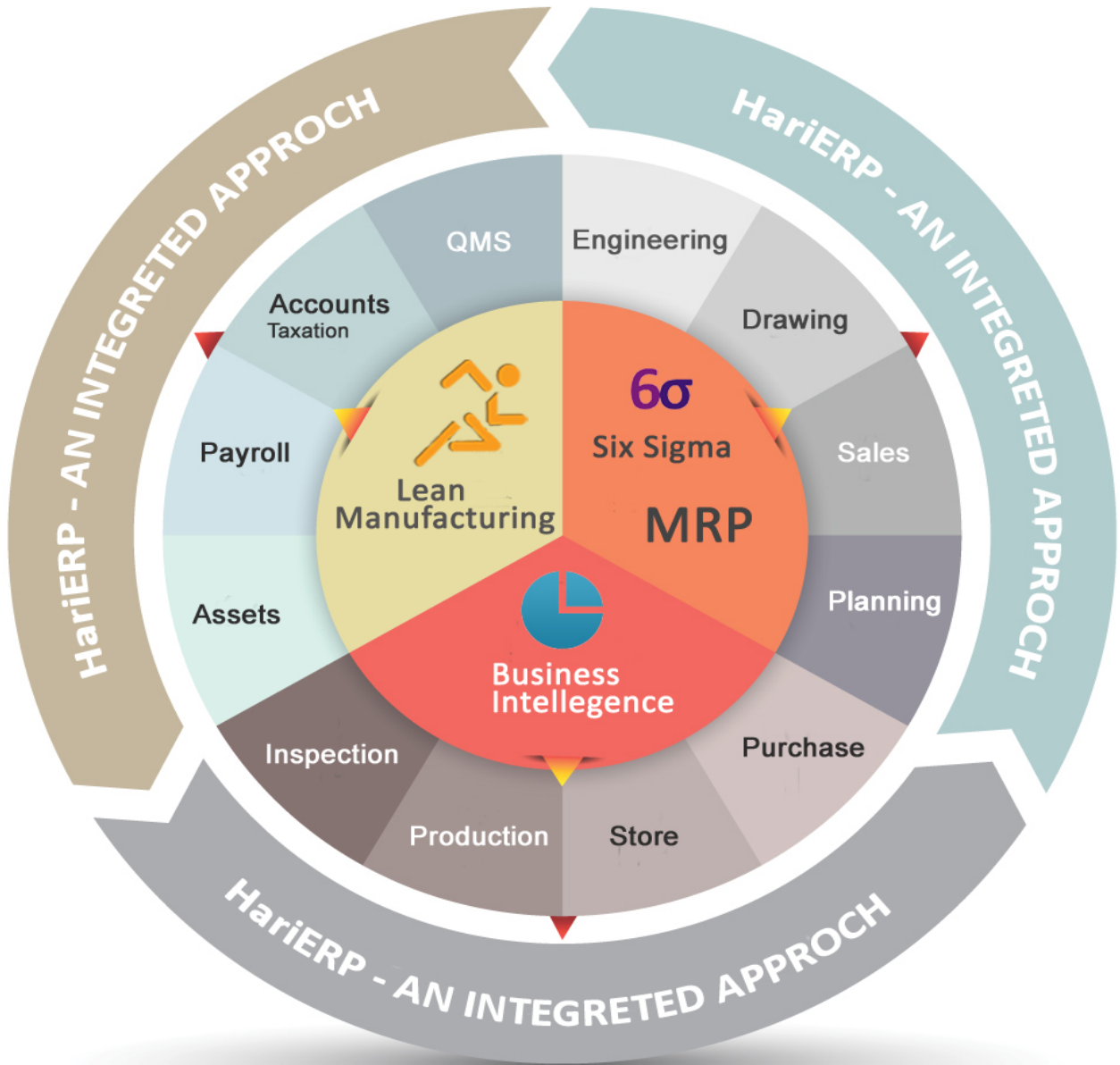




HariERP[®]
Customised ERP Solution for Industries



Module Details



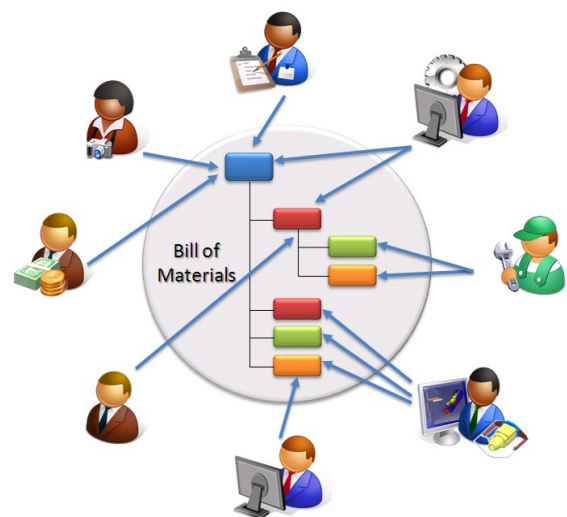
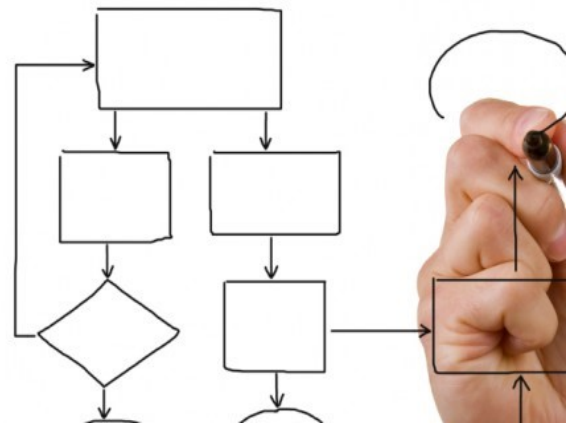
➤ Product & Engineering

Product Module is specifically designed for manufacturing companies who produce products that are highly configurable or are routinely customized to meet the unique needs of the customers. The Concept Product Configuration is scalable and highly integrated to bills of material, Routing, Sales, Stores, Production, Planning, Purchase and other variety of functions. It allows employees to identify & know unique product knowledge with Glossary & terminology to better serve to the customers. In addition, The Product Engineering also builds the item cost and suggested price.



Features :

- **Item Group**
 - Raw Material, BO Items, Component
 - Assembly , Sub Assembly , Product , Others
- **Item Subgroup**
 - Subgroup to enter against above Item Group
- **Item Bank**
 - All Existing items to entry with Item Group and Sub Group, Detail Text , Purchase and Store UOM , Conversion Factor , Item Drawing , Item Picture & Final Inspection Parameters
- **Item Configuration (Make Items)**
 - Define Routing , Lot Size SMH, Queue Time , Rollup Cost
 - Define Material Required Per Routing per Unit
 - Stage Inspection Parameter
- **Overhead Budgeting**
- **Integrated Costing**
 - considering Material Cost , Labor Cost , Overhead & Special Charges.
- **Master Maintenance**
 - UOM Bank
 - Operation Master
 - Inspection Master
 - Machine Master
 - Work Center Master
- **Technical Glossary**
- **Engineering Calculation Tools**
- **Product Data Sheet**
- **Cost Rollup**
- **Reports , Dashboards & Analysis**
 - Master Bank Reports
 - Item Bank Reports and Data Filter
 - Make item process Details
 - Bill of Material (Multilevel)
 - Item Inspection Details
 - Item Where Used
 - Operation where Used
 - Machine where Used
 - Inspection Where Used
 - Work Center Where used
 - Costing of Items



Thus Manufacturing know how of the organization will be trapped from this module and that will serve Sales, Stores, Production, Planning, Purchase and other variety of functions

➤ Drawing

HariERP® Drawing Organizer archives all your engineering Drawings in one secure database using attachment method in non editable PDF/DXF Format. It also stores and organizes these files with Product Engineering module serves them up to client users. Access to this database is restricted to authorized personnel only.

Features :

- **Drawing Register with Category**
- **Contract Drawing Register with approval**
- **Drawing Circulation Record**
- **Design Change Request , Approval**
- **Engineering Change Notice**
- **Pattern Management**
- **Reports , Dashboards & Analysis**
 - Drawing Register
 - Drawing Circulation Reports
 - Engineering Change Reports
 - Drawing Viewer
 - Track Drawing Where Used



➤ Sales

HariERP® Sales Module automates Sales Quoting, Forecasting, Order Processing, Invoicing as well as Logistic Management. Sales System is completely integrated with Core Manufacturing, Accounts and all other functional modules. In Fact All Invoicing Data are automatically strike on Accounting Ledger and Taxation Module. Hence Sales Bill Entry is not required on Accounts Module.

Features :

- **Customer Master Maintenance**
- **Integrated CRM , Lead Analysis ,Enlistment Track**
- **SERVICE REQUEST . AMC , HISTORY LOG**
- **Contractor/ Agent Master Data**
- **Enquiry Register , Enquiry Review**
- **Quotation with Approval**
- **Quotation adjustment with Customer Order**
- **Competitor Price update**
- **Sales Forecast**
- **Generate Work Order**
- **Work Order Entry**
 - Commercial & Material Part
- **Order Acknowledgement**
- **Order Amendment procedure**
- **Tax Invoice / E-Invoice Indigenous & Export**
Manufacturing, Service , Sale of Assets, Scrap Sale , Purchase Return
- **Other Invoice** Proforma, Commercial
- **Packing List**
- **Transporter Database**
- **Despatch Intimation, Export Management**
- **Customer Feedback & Complain**
- **Reports , Dashboards & Analysis**
 - Customer, Agent Reports, Data Filter
 - Enquiry Register, Quotation Register
 - Regret Register with reasons
 - Sales Forecast Report
 - Quote Strike Report
 - Order Checklist
 - Order Register , Sales Register , Data Filter
 - Pending Order Register, Data Filter
 - Top N Product , Top N Customer
 - Order and Sales Dashboard
 - Cancelled Order Information
 - Orders under hold with reasons
 - Customer Feedback & Complain



➤ Planning

Planning Module prepares Master Production Schedules (MPS) from pending orders determined by the planner. It will generate detailed work center Machine Load & tracks production, quality inspection and issue of material.

Features :

- **Master Planning Schedule** (Based on Work Order / Make to Stock Order)
- **RUN MRP** to review Child Item availability through automatic integrated MIS considering Actual Stock, Plan Period Requirement, Pending Order Requirement , Materials in way, Un posted Indent, Materials under inspection , Parent Consume, Max-Min-EOQ Level , Finish goods consume & Forecast Demand.
- **Generate Material Indent , Approval**
- **Reports , Dashboards & Analysis**
 - Work Center Capacity and Load Analysis
 - Work Center Production Schedule
 - Track MPS and Work Order Progress
 - Planned Vs Achievement



➤ Purchase

Purchase Function maintains an uninterrupted flow of materials while at the same time it has to reduce inventory obsolescence without a reduction in consumer satisfaction. It must have an accurate specification of materials required and a clear understanding of their cost and importance.

Features :

- **Vendor Management**
- **Vendor Registration Process**
- **Item wise Supplier List**
- **Review Planning Indents**
- **Generate Enquiry**
- **Vendor Price Updating /Quotation Entry**
- **Comparative Statements of Quotations**
- **Vendor Price History**
- **Placing Purchase Order / Job Order**
- **PO Follow-up**
- **Import Management**
- **Reports , Dashboards & Analysis**
 - Vendor List , Data Filter
 - Top N Vendor
 - Enquiry and PO Tracking
 - Item Price History
 - Open Purchase Order
 - Vendor Supply Delay
 - Vendor Rejection
 - Vendor Rating based on Set Criteria



➤ Store

Store management system developed to locate prompt physical stock of Raw Material, BO Items, Component, Semi finished Components, Sub Contractor (Outside processing) & Finish goods Stock. This module is completely integrated with Purchase, Financial Accounts as well as Inspection (QC) to satisfy needs of material management .

Features :

- **Multi location GRN Entry** (Truly integrated with Purchase Order & Sub contractor pending materials and Job Card
- **Issue of raw material & semi finished material on Job Card & prepare Challan or Gate Pass for sub contractors**
- **Material Return from production.**
- **Rejection Maintenance**
- **Bar Code Integration**
- **Reports , Dashboards & Analysis**
 - GRN Data Filter
 - Issue Data Filter
 - Material Register
 - Sub Contractor Register
 - Work In Progress
 - Automated from Open Job Card Progress**
 - Finished Goods Register
 - Stock Valuation
 - Store Ageing Analysis
 - Monthly Store Movement
 - Job Consumption Variance
 - Lot Tracking



➤ Production

Production Management module is a Integrated, real-time comprehensive tool for scheduling and manage production, review critical reports, and improve productivity. This module provides management ability to monitor Job Card Progress, Machine daily production and analyze all variances for scheduling, material usage, labor hours etc.

Features :

- **Machine and Operator Master**
- **Shop Calendar**
- **Job Execution Details** with Production Job Card.
- **Project Planner**
- **Tools Life Posting**
- **Preventive Maintenance**
- **Machine Fault Booking**
- **Reports , Dashboards & Analysis**
 - Daily production Sheet against Job Card , Work Center, Machine , Operator
 - Over time, Down or idle hour
 - Work Center Present Load
 - Installed Capacity from shop calendar
 - Manufacturing Lead Variance
 - Manufacturing Reject Register
 - Manufacturing Rework Register
 - Production Scrap Analysis
 - Tools Life Register
 - Preventive Maintenance Register
 - Machine Fault Register



➤ Inspection

HariERP® Integrated quality control modules that fulfill all ISO standards mandated by Internal, External Auditors and Product regularity bodies.

Features :

- **Quality Assurance Plan**
- **GRN Adjustment & get Quality Control Record with item wise inspection parameter** for Bill Passing
 - Raw Material
 - BO Items
 - Sub Contractor Receipt
 - Others Receipt
- **Update Daily In House Job Card Inspection**
- **Supplier Test Certificate Storing Per GRN**
- **Finish Goods Inspection**
- **Generate Product Test Certificate for Customer**
- **Product Guarantee Certificate**
- **Inspection Equipments calibration**
- **Lab Test certificates**
- **Inspection Agencies**
- **Inspection Call to Third Parties**
- **Reports , Dashboards & Analysis**
 - Inspection Agency Reports , Data Filter
 - Quality Control Record Register
 - Product Test Certificate Register
 - Product Guarantee Certificate Register
 - Calibrated Inspection Equipments
 - Instrument calibration pending report



➤ Assets

HariERP® Asset Management allows you to track, locate, depreciate, manage and analyze all to company's assets efficiently. It also integrated with the task tracking module of the system giving you the ability to track the service history on each asset.

Features :

- **Asset Group**
- **Asset Sub Group**
- **Asset Database**
- **Asset Maintenance**
- **Asset Expenses via Budget**
- Assets depreciated values auto Journal while reviewing Balance Sheet**
- **Reports , Dashboards & Analysis**
 - Depreciation Schedule Report
 - Sales of Assets Report
 - Assets Write off Report
 - Assets Lost of Report
 - Assets Maintenance History



➤ Payroll & HRM

Employees are great resource of an Organization and are a crucial factor for success and growth. **HariERP®** Human Resource Management manages all personal resources more effectively .

Features :

- **Organization Chart , Tree view**
- **Departments, Divisions and Position with delegation of responsibility**
- **Employees Database with all personal details, skills, qualifications , Pictures**
- **New Appointment , Transfer, Termination**
- **Time & Labor Management - Daily timesheet Start & Break time**
- **List of Holidays**
- **Monthly Payroll – Salaried and Hourly Pay**
- **Loan Adjustment**
- **Bonus Calculation**
- **Arrear Calculation**
- **Competency Mapping**
- **Leave Request , Approval**
- **Form 12, Form 16**
- **Notice Board**
- **Internal Meeting Records**
- **Notice Board**

- **Reports , Dashboards & Analysis**
 - Employee List , Data Filter
 - Attendance Report
 - Payroll Register
 - Play Slip Printing
 - PF , ESI , PTAX Reports
 - Employees CTC
 - Leave Register
 - Medial Allowance Report
 - Bonus & Arrear Register
 - Loan Analysis
 - Employees Training Records
 - Competency Records , Service History



➤ Admin

Administration and Security are at the heart of the system. In this module, role-based security has been implemented. Groups with certain roles and privileges can be defined. Administrator to assign rights at any level. There are extensive restrictions on working on the basis of back dates. Users and groups can be restricted from editing backdated entries or modifying audited entries

Features :

- **System Status**
- **User Creation and Security**
- **User Log History**
- **Currently Log Users**
- **Users activity monitoring**
- **System Setup**
- **Data Audit Trail**
 - **Administrator can review specific record last edit or delete history with user name, date and time .**
- **Data Backup**

- **Reports , Dashboards & Analysis**
 - User List with Password History



➤ Accounts

HariERP® Accounts module is a financial management system that ensures effective management of financial transactions with multiple currency transactions. Integration of all the information provides cross-functional and up-to-date reports for quality decision-making. It is designed to offer you a holistic view of your company's finance-related functions, including Tax Planning and Treasury Management.

Features :

ACCOUNTS SETUP WITH GROUPS

CASH/ BANK / PETTY CASH

Cheque Printing, RTGS Letter , Payment Advice.

CEO to Decide Fund Remittance limit for the period. System will Prevent Cheque printing out of this Limit.

- Option to print daily summary of Receipts & Payments
- Option for Yearly/Monthly/Daily balancing
- Double Column Cash Book with one Cash and multiple Banks
- Bank Clearing Dates

JOURNAL BOOK

PURCHASE BILL REGISTER

Bill shall be entered to accounts with brake up of Taxation which will reflect on all Taxation Ledgers. Bill Checking is truly integrated With PO and GRN.

- Date-wise / Party-wise / Work Order Wise
- Summary with Daily / Monthly totals

SALES BILL REGISTER

Integrated with Sales Module. Data with brake up of Taxation shall be automatically posted To accounts , and all Taxation Ledger while Generating invoice.

GENERAL LEDGER

- Option to print Sub ledger details and Auto Entry Details
- Option to print Daily balancing and Narration

SUBLEDGER

- Schedule format also available
- Option to print balance after each transaction
- Option to include Control account balance, Sub ledger address, etc.

NET POSITION FUND

- Current Bank/Cash fund available (as on any date)

TRIAL BALANCE

- Group-wise
- Monthly columnar format

PROFIT & LOSS AC / BALANCE SHEET

- Available for any period range between accounting period
- Option to print in T-form and L-form
- Option to include previous year figure
- Option to print only Group total rather than printing all ledger

DEBTORS LEDGER

Outstanding Bill
Customer wise
Bill Ageing Analysis , Credit Period Analysis

CREDITORS LEDGER

Outstanding Bill
Vendor wise
Bill Ageing Analysis , Credit Period Analysis

PURCHASE RETURNS / SALES RETURNS

GST REGISTER

- Input Register
- Output Register
- GSTR 1, 3B

SALES TAX

- C Form Register – Customer and Vendors
- C Form Pending – Customer and Vendors

RECEIPT / PAYMENT REGISTER

- Option to print daily or monthly total
- Option to print summary of payment and collection
- Option to include voucher details

FUND UTILIZATION , EXPENDITURE ANALYSIS

FUND BUDGETING, BANK RECONCILIATION

CASH FLOW STATEMENT

BANK GUARENTEE , LETTER OF CREDIT

SILENT FEATURES

Auto Posing of Closing Stock, Depreciation , Assets Value , Interest on Fixed Deposit , Prepaid Insurance , Insurance For the Period , Unsecured Loan while reviewing PL and BL Sheets to eliminate the effort of the accountant and **get actual profit & loss at any time.**



➤ Taxation

Taxation is the Integrated parts of Accounts. **HariERP®** Takes care of All Income Tax , Sales Tax , Excise , Service Tax requirements and that eliminate your efforts

Features :

INCOME TAX

- TDS , TCS Register and returns
- Income Tax returns

GST

- Input Register
- Output Register
- GSTR 1, 3B

SALES TAX

- C Form Register – Customer and Vendors
- C Form Pending – Customer and Vendors

All Returns XML will be auto generated where necessary



➤ QMS

QMS, is the Key factor of any industry. An industry can grow by developing his quality in continual process. Today's context all we need to follow the QMS as per ISO 9001 or equivalent. **HariERP®** will assist you in true sense to maintain the QMS system in real time. Following procedure will be silently available for you

Features :

- **Design Control**
- **Enquiry Review , Contract Review**
- **Customer Complain , Feedback**
- **Rejection , Rework Analysis**
- **Inspection Equipment Calibration**
- **MPS Achievement**
- **Quality Control Record**
- **Vendor Rating**
- **Training Records**
- **Legal Requirements**
- **Objective and Targets**
- **MR Function**
- **Internal Audit Report**
- **Corrective , Preventive Action**
- **Management of Changes**
- **Risk Assessment**
- **Safety Committee , Safety Monitoring**
- **Fire Extinguisher Log**
- **Near Missed Accident**
- **E Waste Register**
- **Management Review Meeting Details**



Over and above **HariERP®** provides a quarterly Fact analysis for the Top Management to indicate the Key Performance (KPI) of the Organisation.

➤ Highlights

Unlimited Users

HariERP® Offering Unlimited User License (no price per user) for **on premises** deployment which definitely reducing cost of ERP Implementation and you will get better cost benefits. More over you have no cost implication for the future growth of your Organization.



Highly Customizable

Highly customizable as per your organization need but industrial best practices are to be followed. You might think that your needs are fairly close to everyone else's, and you don't really need customized ERP software. However, Generic approaches miss both simplifications and extra depth specific to your way of doing business. Customization puts you and your staff at the heart of the system.



CEO Dashboard

HariERP® provides CEO Dashboard in all core functions of Manufacturing. Dashboard are easy to read, real-time user interface, showing a graphical presentation of the current status (snapshot) and historical trends of an organization's and key performance indicators (KPI) to enable instantaneous and informed decisions to be made at a glance.



Export Data to Other Formats

You can easily export all reports and data analysis to PDF , WORD, EXCEL, **Open Office** Format for better Use of the same



Quick Document Retrieval

Today one of the most hazardous works is to retrieve all your documents. As you can upload store all your documents to all the functional modules hence by using **HariERP®** you can retrieve your documents in lighting speed.



Design Own Reports , Graphs

On and above **HariERP®** allows your expert users to generate required data using **SQL Express** and port the data on excel to design your own reports and analysis and graphs .



Integrated Email and SMS

HariERP® integrates Emails and SMS from the system. As per your wish you can get the SMS as well as email alerts from the system itself on the event like Invoice Generation, Expiry of Statuary Documents, Machine Fault etc.



Online Approvals

There must be some approval system belong in every organisation. **HariERP®** provides a online approval procedure in all the process like Production Planning, Design Finalization, Purchase Indent, Creditors Payment etc. by the process owner. Without the approval there will be no progress on that work flow. So by using **HariERP®** you can leave all your worry on your day to day work.



➤ Highlights

Daily Planner , Set Alert

You can plan your daily routine through our integrated Daily Planner and you can also set alarm on that.



Multi Currency

You can handle all your Foreign Currency in a Single Platform incase of Sales and Purchase and can attached the export and import documents For quick retrieval.



Role Based Pending Activity

You can map the work time frame of each role in your organisation and you can monitor the same from the Pending Activity Dashboard.

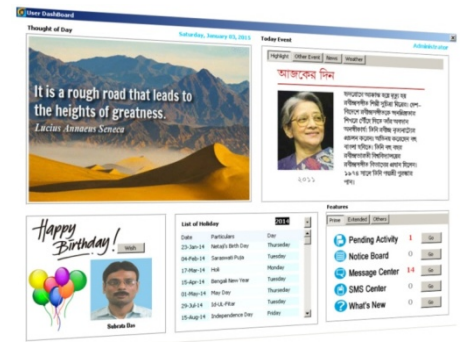
By monitoring the Pending Activity Dashboard and followed by NCR on the user , the system will ensure a real time data and run your organisation in optimum level.



My Dashboard

HariERP® Provides you My Dashboard with following features which will relax you from the daily routine. Apart from that it also helps you to perform your daily work on time by showing your pending works.

- **Thought of the Day**
- **Colleges Birthday**
- **Your Holiday List**
- **Notice Board**
- **Web Chat, Current Event**
- **Weather update, world map**
- **Test Your Knowledge**
- **Opinion Poll**



And your **Pending Activity**

Integration with Bio Matrix

HariERP® integrates Bio Matrix System to fetch the employee's attendance data in Payroll Module. You can also monitor the attendance from your desk.



Easy Training Method

Modules wise Training shall be arranged during implementation till understand of all functions and work flows.

HariERP® also integrated Training Videos , User Manuals Inside the ERP . Hence you can easily refer the same during real time work where necessary.





Hari Infolines

Corporate Office
Regus Business Centre - Camac Street
PS Arcadia Central, 9th Floor,
4A, Abanindra Nath Thakur Sarani,
Kolkata-700016
West Bengal, India
Phone : +91 9874218225
corporate@hariinfolines.com

Registered Office
57/3, B.P. 2nd Bye Lane
PO : D.S. Lane, Howrah-711109
West Bengal, India
Phone : +91 9874218225
+91 6289739082
info@hariinfolines.com

Website : www.hariinfolines.com
Face book : <https://www.facebook.com/Harierp>
Twitter : <https://twitter.com/HariInfolines>
Skype : Hari Infolines